



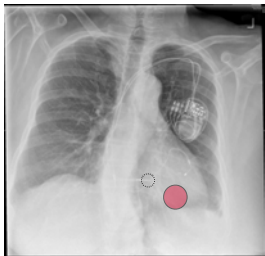
Common pacemaker problems and resolutions

Infection and lead displacement

Post implant complications



- Lead displacement
- Infection



Lead displacement

- Lead impedance jump
 - Very high threshold
 - Unable to capture
 - Small sensing amplitudes
- 1 or more from list
+
 - Patient chest X-ray

Suspected / Confirmed



Solution



Infection

- Pain
 - Swelling
 - Redness
 - Oozing
 - Temperature 38°C
- Clinical diagnosis

Suspected / confirmed



Solution

Takeaway message



Lead displacement can render the pacemaker **totally useless**.
Pacemaker infection can be **fatal** if not treated.
